

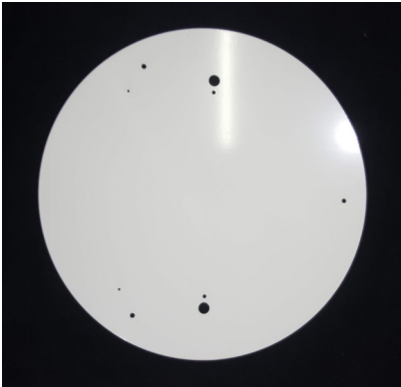


Rotaid AED Cabinets
TOTEM



INSTALLATION MANUAL

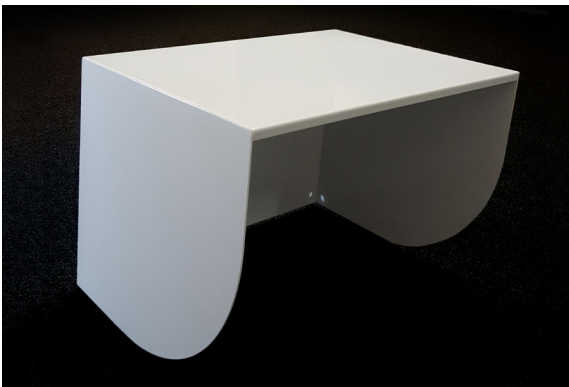
Parts-list



Footplate



Totem



Sunroof (optional)

Notice!

When finding a location for your totem, please take into account:

- *Possible fire – and safety regulations*
- *The cabinet should be in the shade at all time. (if no sunroof applies)*
- *Installing the totem in a public area? Please make sure to comply with specific local legislation if applicable.*



Screw Set:



Set for footplate



Set for Rotaid Wall Cabinet



2x Allen key
(4 en 5 mm)



Set for sunroof

Mounting the totem (requires 2 persons)

1. Before starting assembly of the totem, please make sure to do this on a protected floor so the totem will not be damaged.

Fixate the foot plate to the totem frame, by using the bolts, washers and rings and an Allen-Key (5mm).



2. Before mounting the cabinet to the totem, please remove the 4 bolts of the cap on the rear of the rectangular spacer by using the 4mm Allen-Key.



3. Now fixate the backplate of the Rotaid cabinet via the 4 bolts, washers and nuts with the 4mm Allen-Key. Use a 10 mm spanner for a secure attachment.



Mounting the heating pad (optional)

There is a hole at the backside of the rectangular spacer, at the top and bottom of the totem. Via this hole, you can wire the cable into the totem frame.

Notice:

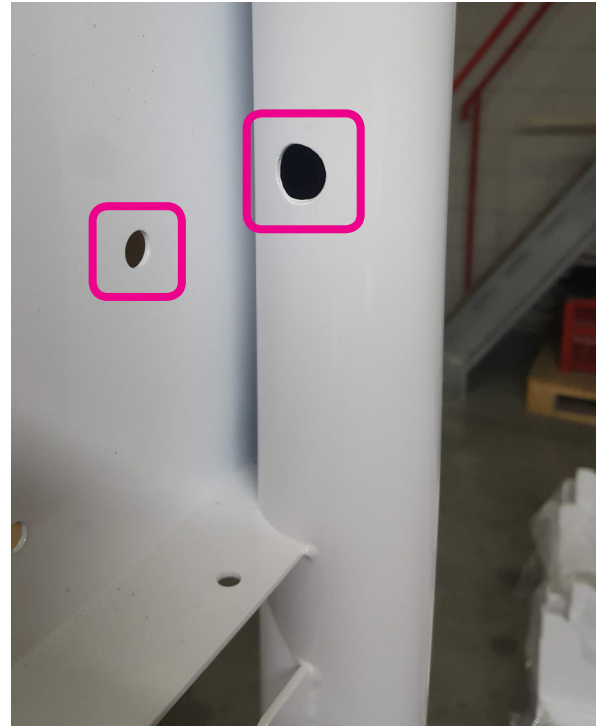
The Rotaid heated outdoor cabinet comes as standard with a transformer for indoor usage.



For outdoor installation of the totem, an IP66 transformer is required. This does not come standard with your totem delivery.

Please make sure the IP66 transformer has the following specifications:





- Input: 100-240VAC, 50/60Hz, 1.3A
- Output: 24V, 3.75A, 90W max.



4. After mounting the cabinet, you can fixate the cap of the spacer again by using the 4mm Allen-Key.





 rotaid.com  info@rotaid.com  +31 (0)478 769 052
 Keizersveld 52D 5803 AN, Venray The Netherlands