

24/7

SET TO RESCUE



Installation Manual

Swap to
Rotaid 24/7

Index

- pag. 3** Flowchart
- pag. 4** Instructions HDPE backplate
- pag. 5** Instructions Polycarbonate backplate
- pag. 6** Instructions Electrical wiring

Rotaid 24/7 contact information



Keizersveld 52K
5803 AN
Venray
The Netherlands



www.rotaid247.com



support@rotaid247.com



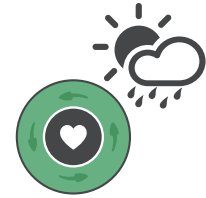
+31 (0)478 769 052

Flowchart

Is your Rotaid cabinet located **inside** or **outside**?



Inside



Outside

Is the backplate of your cabinet made from: **ABS, HDPE or Polycarbonate**?

Is the backplate of your cabinet made from: **HDPE or Polycarbonate**?



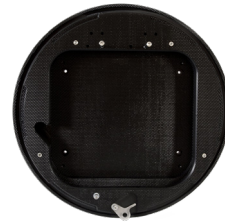
ABS
Rotaid Plus



HDPE
Rotaid Solid Plus



Polycarbonate
Rotaid Solid Plus Carbon



HDPE
Rotaid Solid Plus



Polycarbonate
Rotaid Solid Plus Carbon

Unfortunately your cabinet cannot be used to place outside.

Please contact your supplier.

Please follow the instructions from:

Page 4

Please follow the instructions from:

Page 5

Please follow the instructions from:

Page 4

Please follow the instructions from:

Page 5

HDPE backplate

Rotaid Backplate with fringe-pattern finish

Step 1 - Open the cabinet and remove the alarm system. This can be done by loosening the two small, recessed screws.

Do not remove the coin-sized, alarm triggering magnet in the cover.

This is also required for the audible alarm system for your new installation.

Step 2 - (if cabinet is fitted with Rotaid heating and LED system)

Disconnect the wire from the connector near the transformer unit.

Remove the heating system from the backplate of the cabinet by loosening the four small, visible screws. Please make sure the heating system is removed, including its power cable.

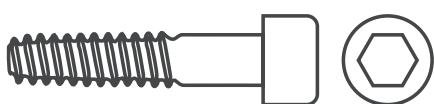
The Rotaid 24/7 module comes with a new transformer unit. This is identical to the unit that is currently part of your installation. You can opt for maintaining the existing unit, or simply replace this unit with the new transformer that comes with the kit.

Step 3 - Remove the 2 bolts on the top of the cabinet, that were used for hanging the AED.

Step 4 - For the electrical installation, please continue to [page 6](#). For mounting the new module on this backplate, the two M6 bolts and washers are required.



ATTENTION:
If your cabinet did not have an alarm yet, please contact your supplier.
You are probably missing a magnetic trigger in the cover.



2x Bolt M6x35mm



2x Washer

Polycarbonate backplate

Rotaid Backplate with carbon-look and Rotaid logo

Step 1 - Open the cabinet and remove the alarm system. This can be done by loosening the two small, recessed screws. Therefore, removal could require a reasonable amount of force.

Do not remove the coin-sized, alarm triggering magnet in the cover.

This is also required for the audible alarm system for your new installation.

Step 2 - (if cabinet is fitted with Rotaid heating and LED system)

Disconnect the wire from the connector near the transformer unit.

Please remove the heating system from the backplate. The heating system is fixated via a large fixating tape. Therefore, removal could require a reasonable amount of force. If any residue remains on the backplate, there is no need to clean it. The surface will be completely covered by the Rotaid 24/7 module. Make sure to remove the system including its power cable.

The Rotaid 24/7 module comes with a new transformer unit. This is identical to the unit that is currently part of your installation. You can opt for maintaining the existing unit, or simply replace this unit with the new transformer that comes with the kit.

Step 3 - Remove the 2 bolts on the top of the cabinet, that were used for hanging the AED.

Step 4 - For the electrical installation, please continue to **page 6**. For mounting the new module on this backplate, the EJOT screws are required.



ATTENTION:
If your cabinet did not have an alarm yet, please contact your supplier.
You are probably missing a magnetic trigger in the cover.



**2x Ejot screw
60x14mm**

Electrical installation

Step 4. Electrical wiring

IMPORTANT!

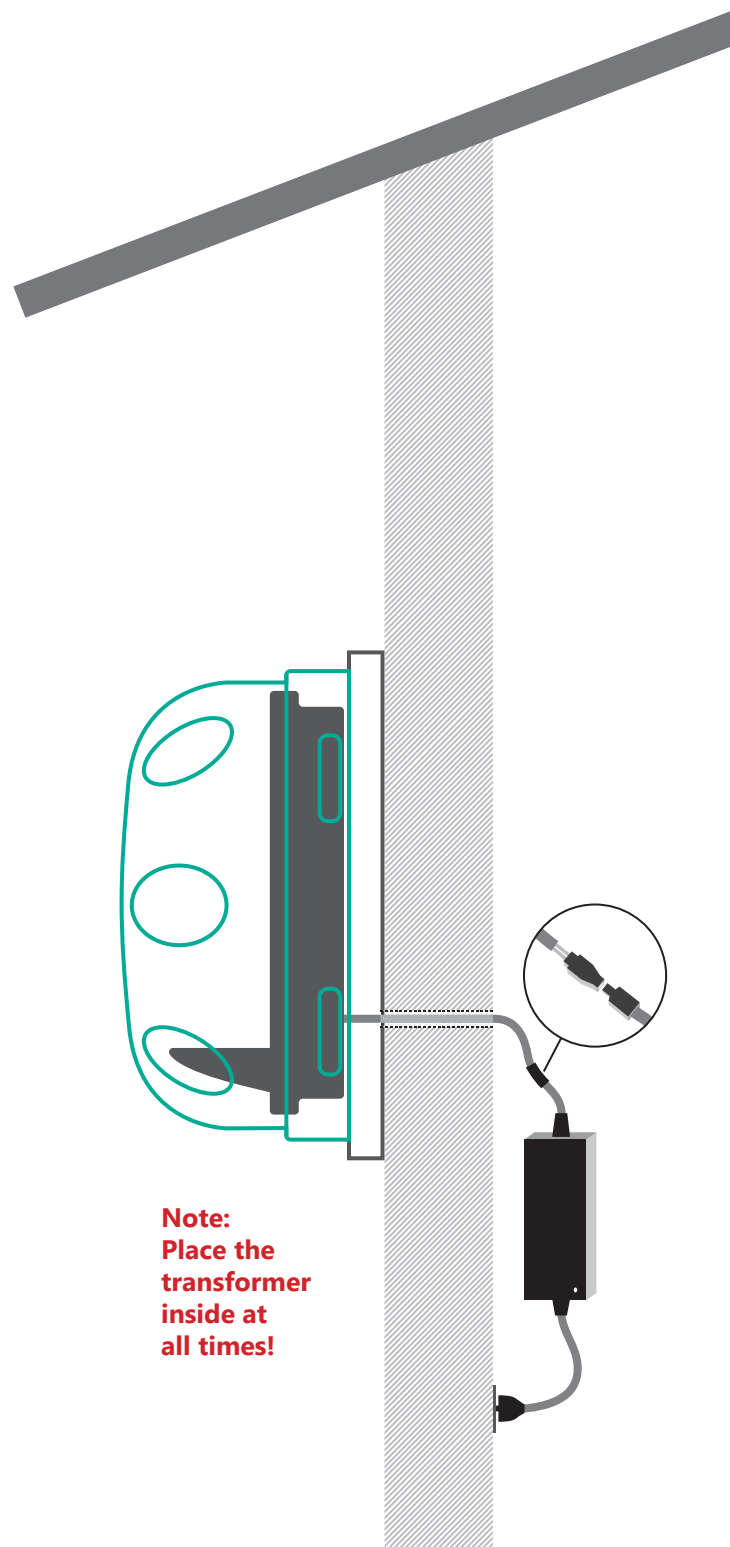
Always place the transformer unit inside since it is not suitable for outdoor usage. Never place the transformer unit inside the Rotaid cabinet!

Cable brown **+**
Cable blue **-**

1. Cut the cable to the required length and strip the outer cable (about 2 cm)
2. Remove 5 mm of the isolation of both cables.
3. Place the crimp sleeve insulator over the cable.
4. Connect both wires to the connector.
5. Place the crimp sleeve over the connector and use a heat gun to fixate. You can also isolate / fixate the connector with tape.
6. Connect the connector to the plug of the transformer (male – female)
7. Now connect the power plug to the transformer and plug the power cable into the wall outlet. The LED lighting in the cabinet is now activated
8. and will be on constantly. This indicates your installation has been successful.
9. Your Rotaid 24/7 is now ready for use!

Step 5. Activate your Rotaid 24/7 system

Please follow the instructions on the Rotaid 24/7 voucher to activate your Rotaid 24/7 account.



Installation manual - Swap to Rotaid 24/7

User manual



The user manual can be found on www.rotaid.com/support or via the QR-code.



De gebruikershandleiding is te vinden op www.rotaid.com/support of via de QR code.



Le manuel d'utilisation se trouve sur www.rotaid.com/support ou via le code QR.



Podręcznik użytkownika można znaleźć na stronie www.rotaid.com/support lub za pomocą kodu QR.



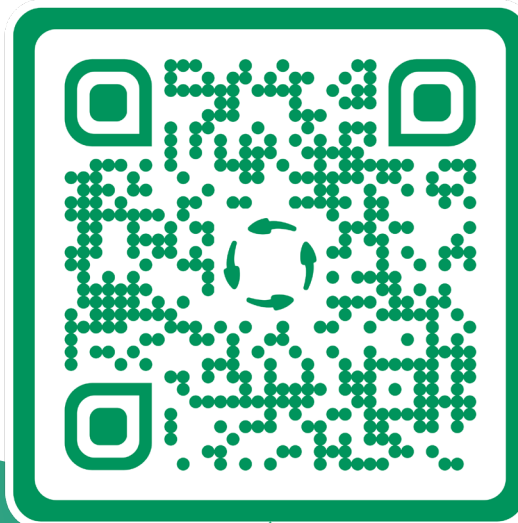
Die Anleitung finden Sie unter www.rotaid.com/support oder über den QR-Code.



Il manuale dell'utente può essere trovato su www.rotaid.com/support o tramite il codice QR.



El manual de instrucciones se puede encontrar en www.rotaid.com/support o mediante el código QR.



SCAN ME



rotaid.com



info@rotaid.com



+31 (0)478 769 052



Keizersveld 52K 5803 AN, Venray The Netherlands